

New Beacon Updates

September 2023



Mobile App v5.2.0

Available for download on the App and Google Play Stores

- Map Layers Filtering
- Topographical Maps
- Traffic view on Google Maps
- Active Incidents count badges
- Ping feature for users with Supervisor View permissions
- Now supporting Interactive Buttons on iOS devices

****** iOS software compatibility requirement. iOS 15 should be installed in order to run this version of Beacon.

Watch the full
MOBILE APP TOUR:
trekmedics.org/beacon/tour/



Web App v7.0.5

Please clear your browser cookies and cache

- Map Layers
- Weather Map layers from OSM
- OpenTopoMap and Google Terrain
- Confirmation windows countdown timers

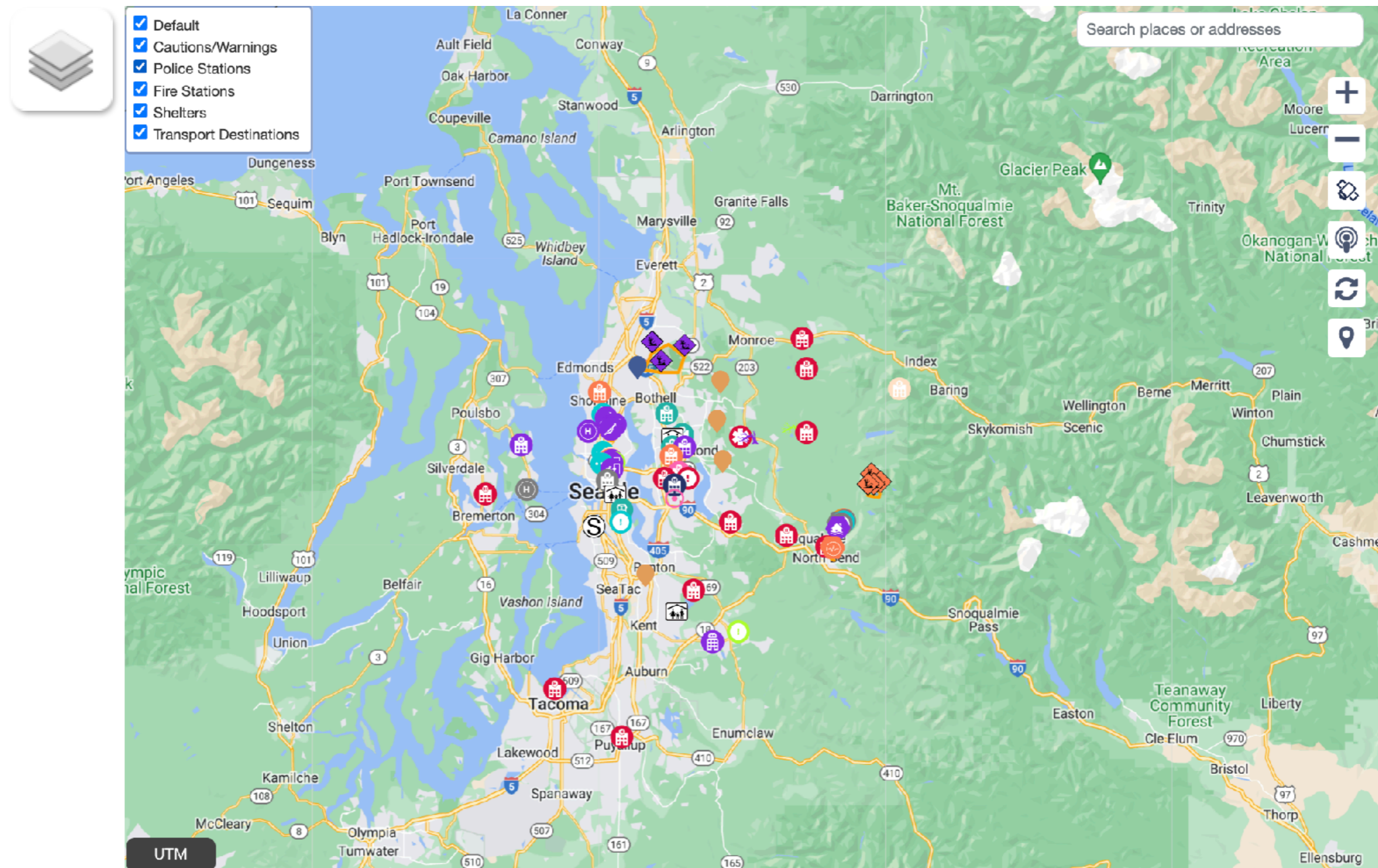


Web App

New Beacon Updates

Beacon now includes Map Layers

Map layers can be used to separate out map markers into groups that can be shown or hidden on the dashboard map to make it easier to isolate specific features and reduce clutter.





Web App

New Beacon Updates

Beacon now includes Map Layers

A new menu item has been added under the Resource List on the settings menu page, selecting Map Layers will take you to a new page where you can add/edit map layers.

Resource Lists

Web App Users List

View

SMS Dispatch Numbers i

View

Map Layers

View

Add New Map Layer

Name

Description

Create

ID	Name	Description	Data Center Name		
399	Cautions/Warnings	Hazard locations	Demo V5.1		
400	Shelters	Shelter locations	Demo V5.1		
401	Police Stations	Police Station locations	Demo V5.1		
397	Transport Destinations	Healthcare facilities	Demo V5.1		
398	Fire Stations	Fire Station locations	Demo V5.1		
329	Other points of interest	Other map markers	Demo V5.1		



Web App

New Beacon Updates

Open Weather Map now available in map layers

This new feature can be found on the Settings Menu page under Dashboard Settings, turning weather maps on will add them to your map layer options on the dashboard.

Dashboard Settings

Admin language

en

Maps Provider

Google

Catchment Area Map

47.5947, -121.9728

Time Zone

-07:00

Data Center on?

On

Weather Maps On?

On

Select whether to show weather map overlays on the dashboard

On

Off

Incident Numbering

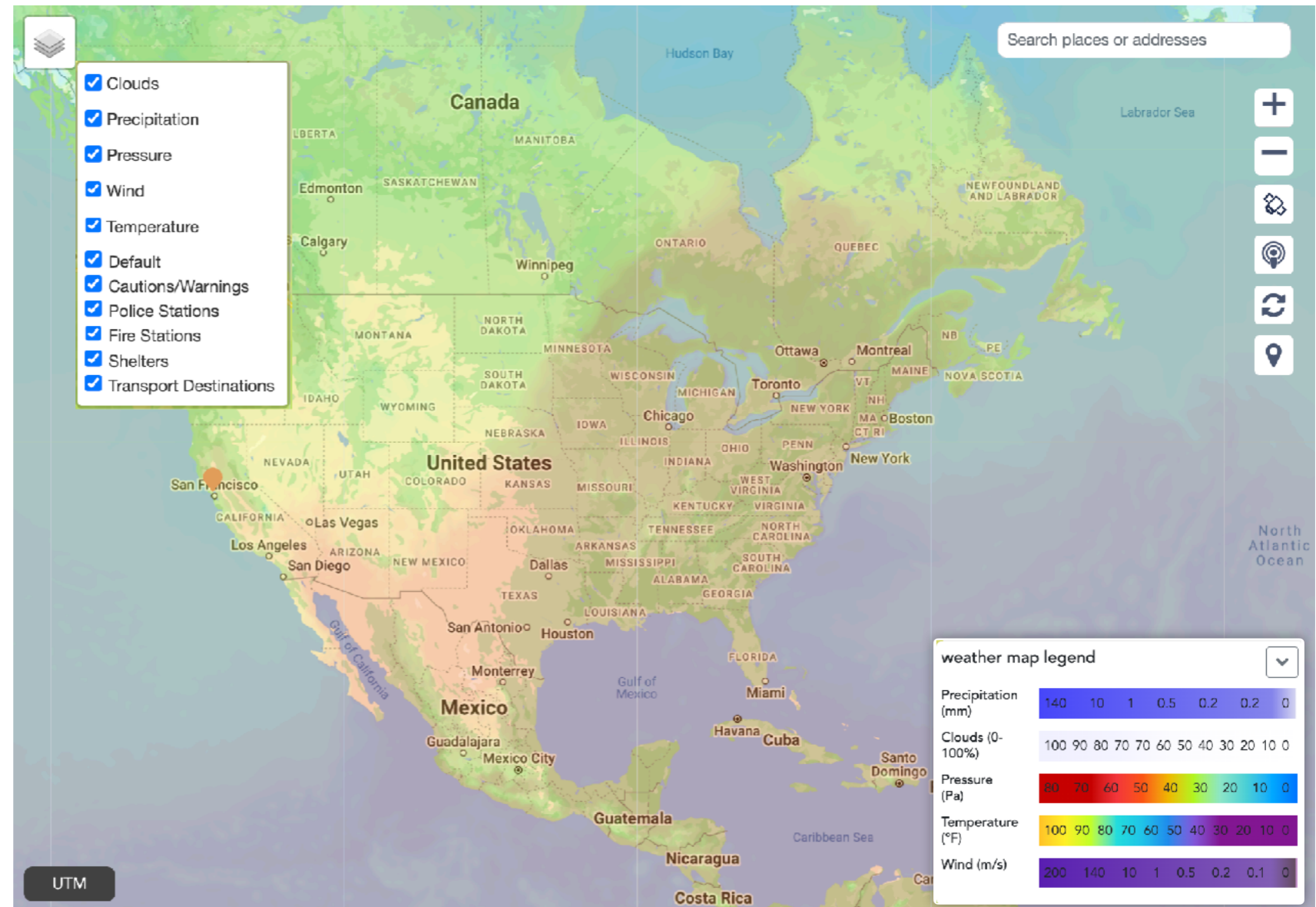
1077

Custom Agency Logo

Change Logo

Additional Notes:

- The corresponding legend will be displayed for the weather feature(s) selected.





Web App

New Beacon Updates

OpenTopoMap and Google Terrain map options now available

1. OpenTopoMap is available as a third Maps Provider option on the Settings Menu page under Dashboard Settings.

Dashboard Settings ←

Admin language en ▾

Maps Provider OpenTopoMap ^

Choose which map provider you would like to use. This map will be seen by dispatchers on the Beacon web pages and by responders in the Beacon mobile app.

☐ OpenStreetMap ☐ Google ☒ OpenTopoMap

Catchment Area Map 47.5947, -121.9728 ▾

Time Zone -07:00 ▾

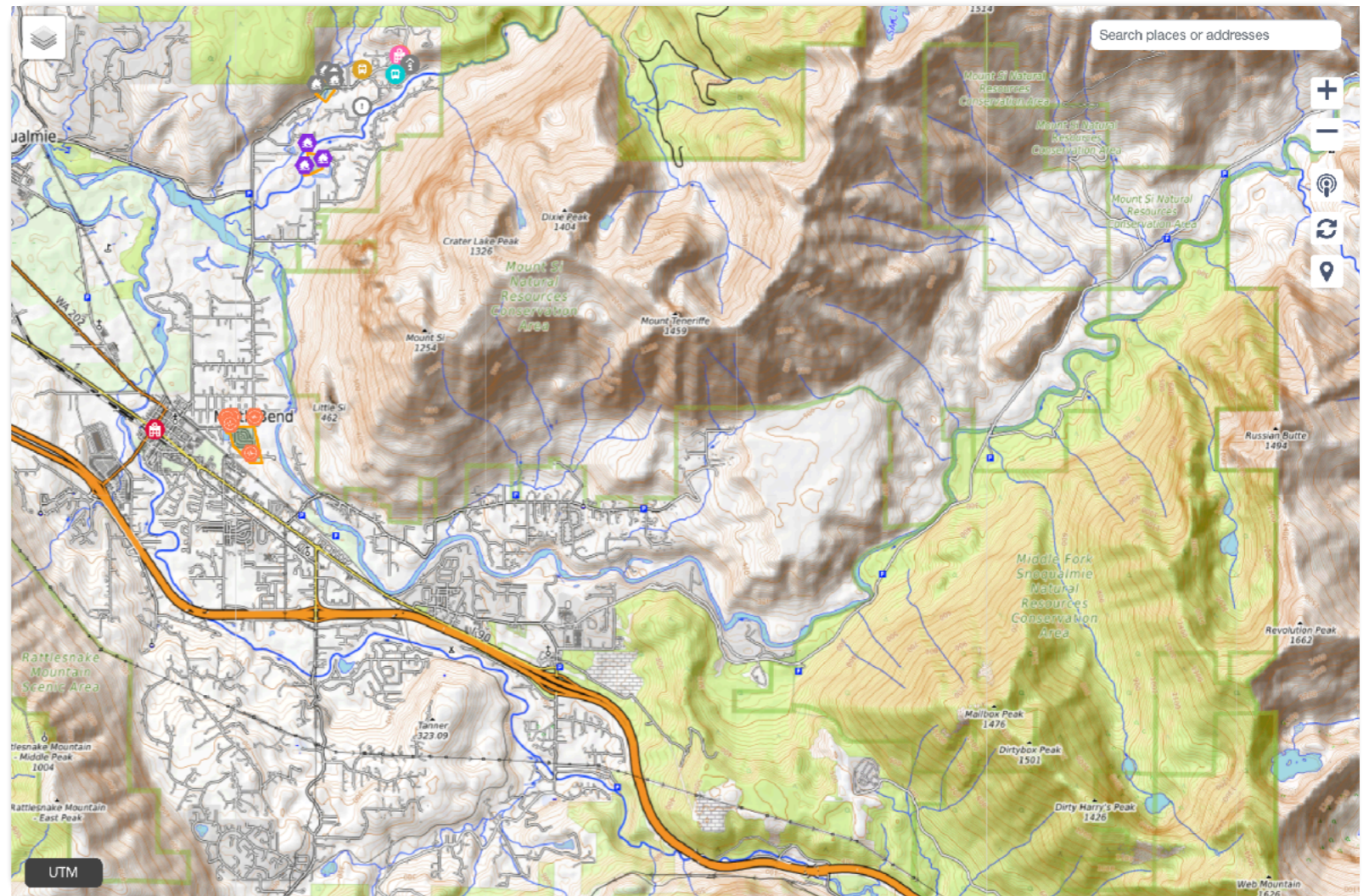
Data Center on? On ▾

Weather Maps On? On ▾

Incident Numbering 1078 ▾

Custom Agency Logo Change Logo

1





Web App

New Beacon Updates

Open TopMap and Google Terrain map options now available

1. For Google Terrain the Maps Provider should be set to Google on the Settings Menu page under Dashboard Settings.
2. Switching between Google Maps, Satellite View and Terrain is done using the dashboard button.

Dashboard Settings

Admin language: en

Maps Provider (Google)

Choose which map provider you would like to use. This map will be seen by dispatchers on the Beacon web pages and by responders in the Beacon mobile app.

☐ OpenStreetMap ☒ Google ☐ OpenTopoMap

Catchment Area Map: 47.5947, -121.9728

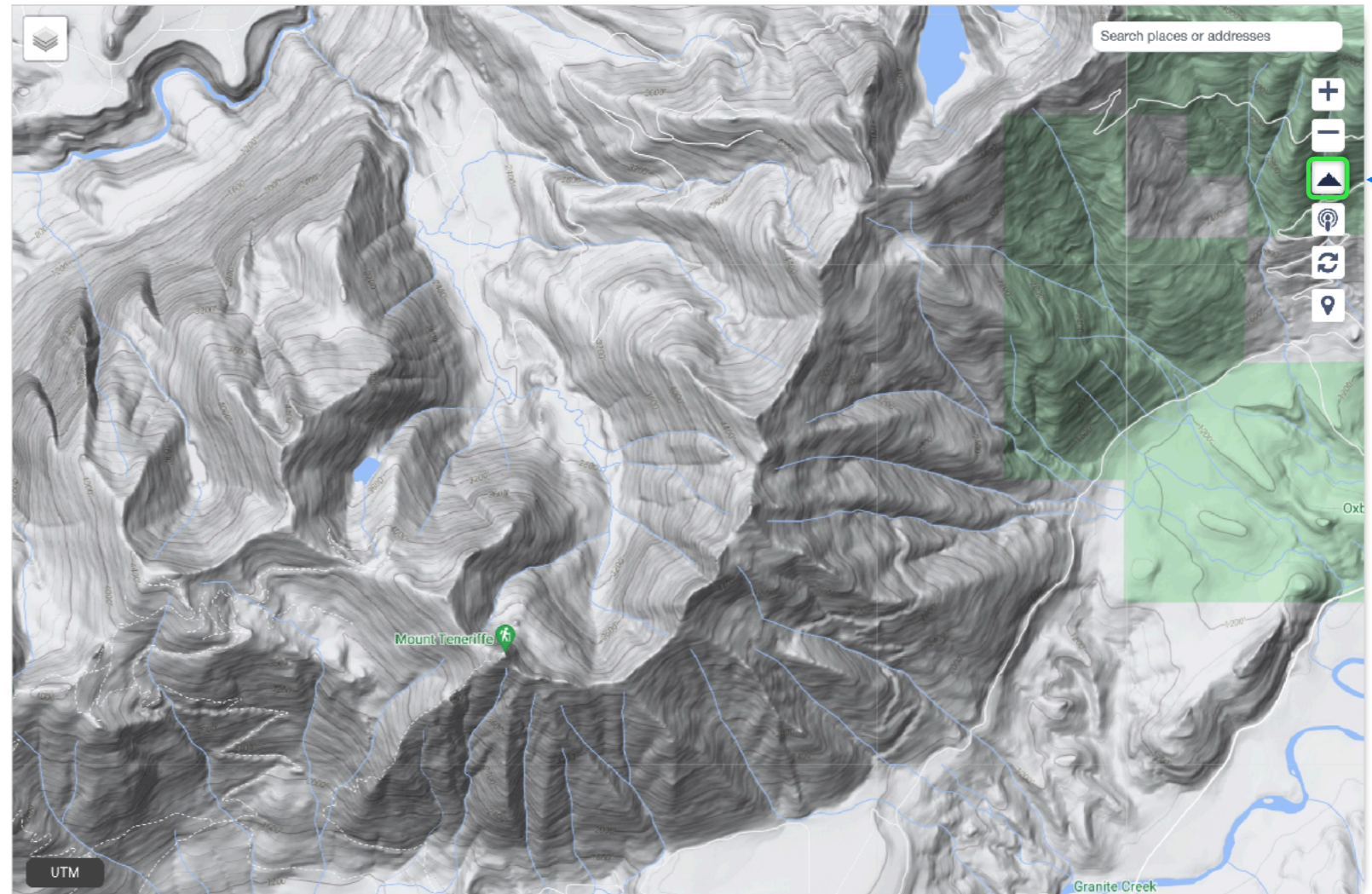
Time Zone: -07:00

Data Center on?: On

Weather Maps On?: On

Incident Numbering: 1078

Custom Agency Logo: Change Logo





Mobile App

New Beacon Updates

Topographical Maps are also available on the Mobile App

1. To change map view, press the *Map Filtering* icon on the Home Screen.
2. Select the **Map provider** you would want to use.
3. Check the box for **Topographical map**.

Google Maps

2

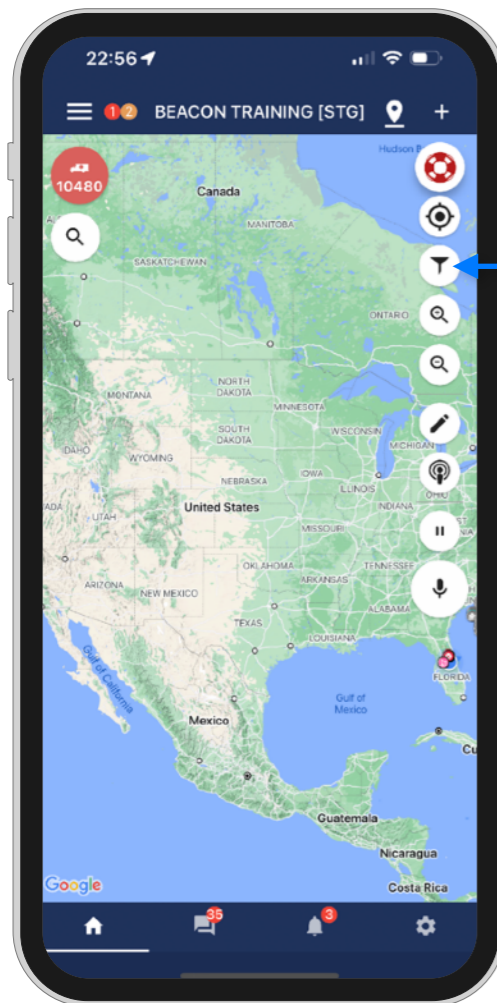
Map provider

<input checked="" type="checkbox"/>	Google	<input checked="" type="checkbox"/>
<input type="checkbox"/>	OSM	<input type="checkbox"/>

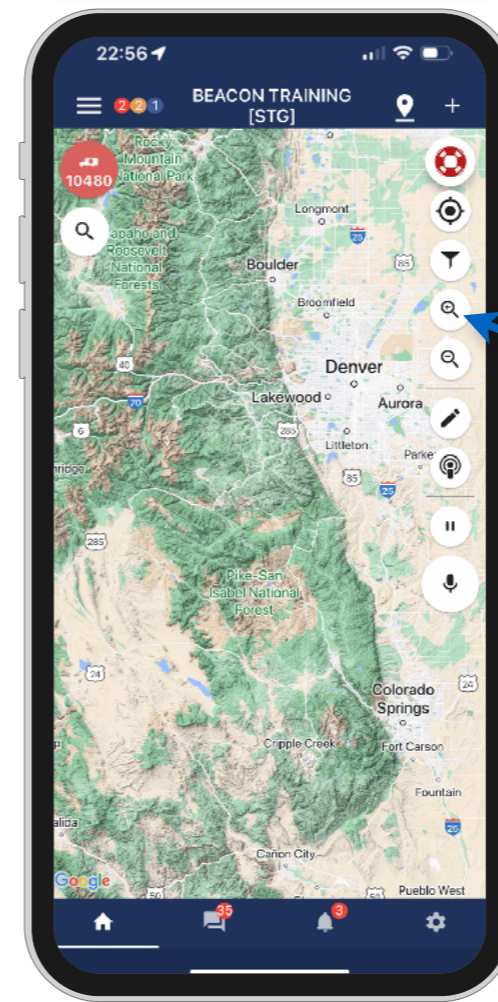
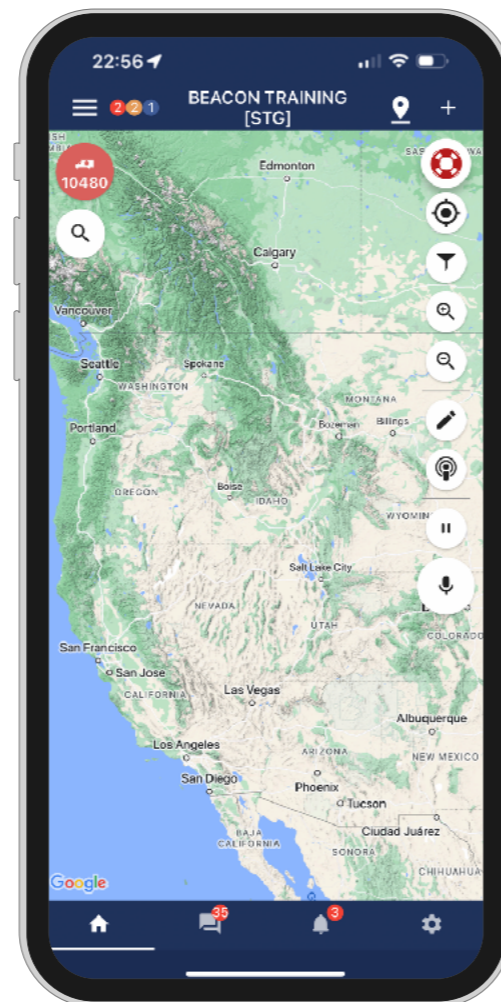
Map

<input checked="" type="checkbox"/>	Topographical map	<input checked="" type="checkbox"/>
<input type="checkbox"/>	Google Road Map	<input type="checkbox"/>
<input type="checkbox"/>	Google Satellite	<input type="checkbox"/>
<input type="checkbox"/>	Show traffic on roads	<input type="checkbox"/>

3



1





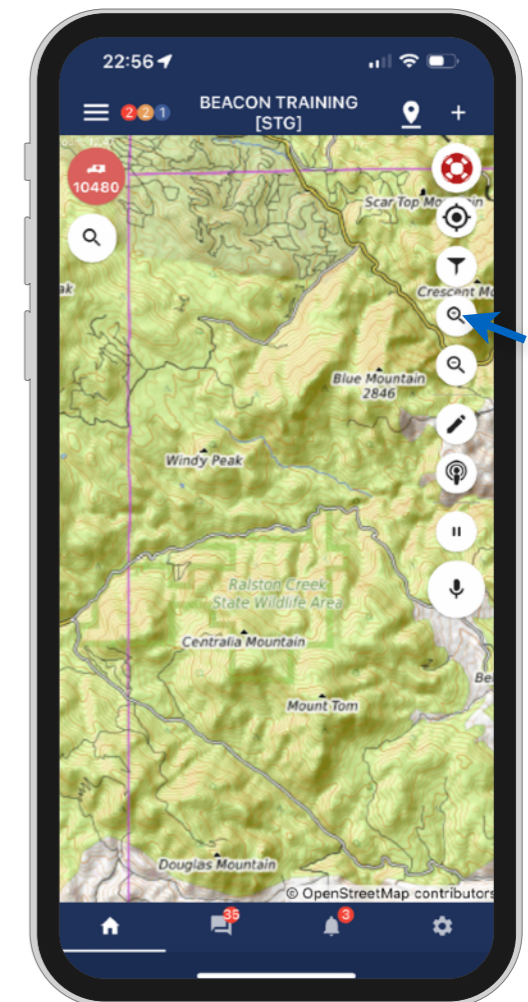
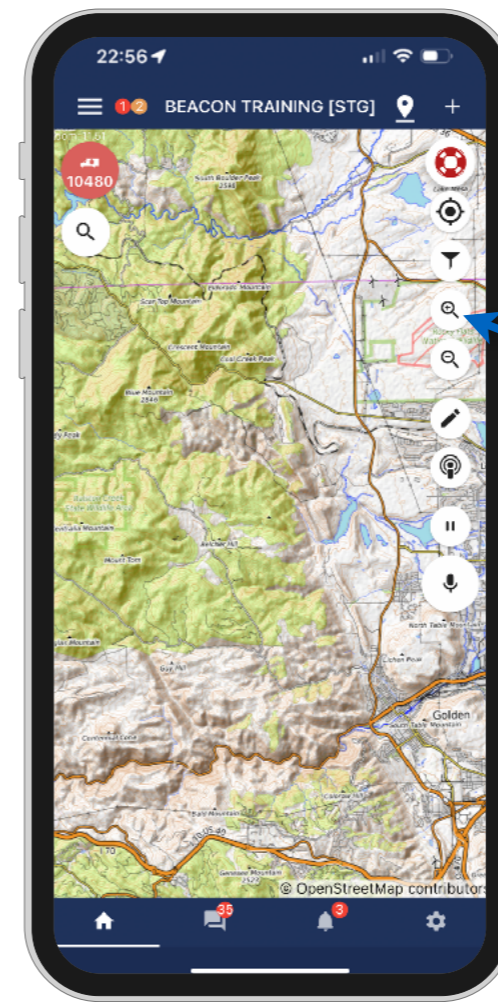
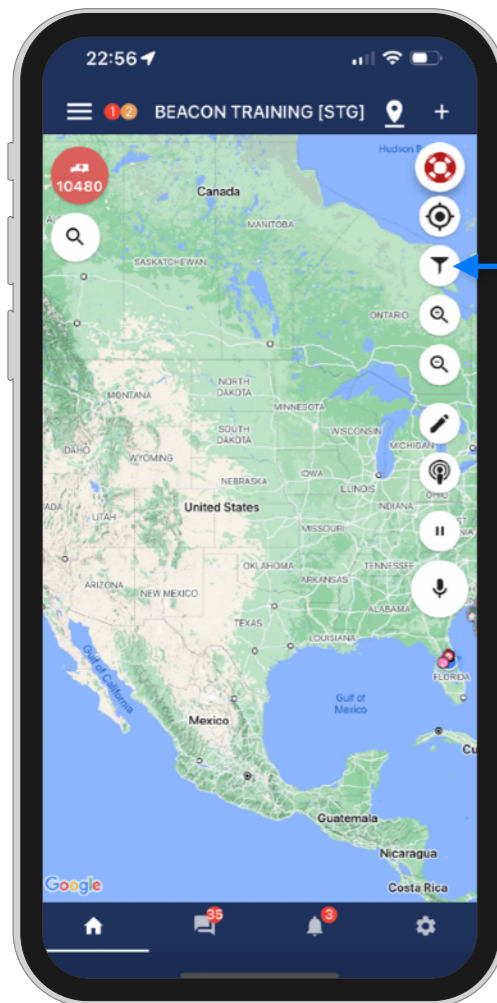
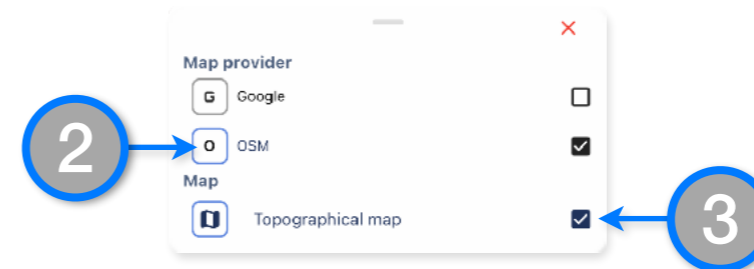
Mobile App

New Beacon Updates

Topographical Maps are also available on the Mobile App

1. To change map view, press the *Map Filtering* icon on the Home Screen.
2. Select the **Map provider** you would want to use.
3. Check the box for **Topographical map**.

Open Street Maps



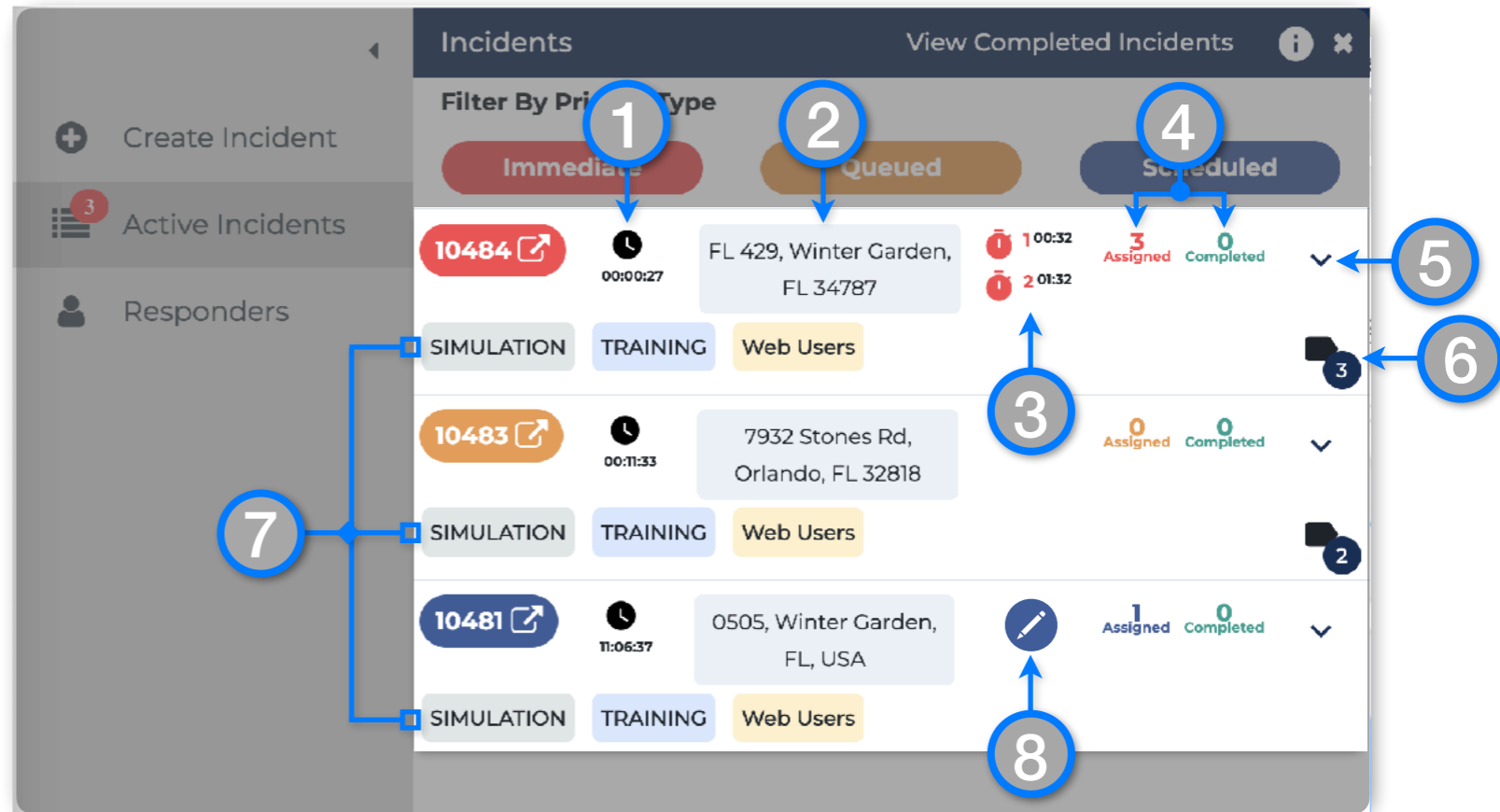


New Beacon Updates

Confirmation Windows Counters and Improved Active Incidents Summary View

Now active incidents will display vital information by default without the need to expand the incident card:

1. **Incident elapsed time** – It displays the time elapsed since the incident was created
2. **Incident location / address** – Clicking it will center the map on the Incident location
3. **Confirmation Windows counters** – These timers will display the remaining time before each Confirmation Window closes as set in the Broadcast Alert Settings for your Beacon Agency Account. ****Only applies to Immediate Incident Priority****
4. **Assigned / Completed count** – These respectively show the count for responders who are currently involved in the incident and the ones that have completed their involvement
5. **Expand / Collapse caret** – Clicking it will expand or collapse the **Incident Summary Card** displaying additional information related to incident monitoring and incident updating features
6. **Incident Responder Tags** – This icon will display the quantity of tags used when creating the incident. Hover over it to display the specific tags used (not shown).
7. **Incident Class | Category | Type** – Incident Class (gray), Category (sky blue) and Type (pale yellow) will always be displayed on the collapsed or expanded Incident Summary Card.
8. **Edit Scheduled Incident activation details** – This button will be available only for scheduled incidents before they become active. Clicking it will open a dialog interface to edit the incident due date / time. *The edit button will disappear once Scheduled incidents become active.*





Mobile App

New Beacon Updates

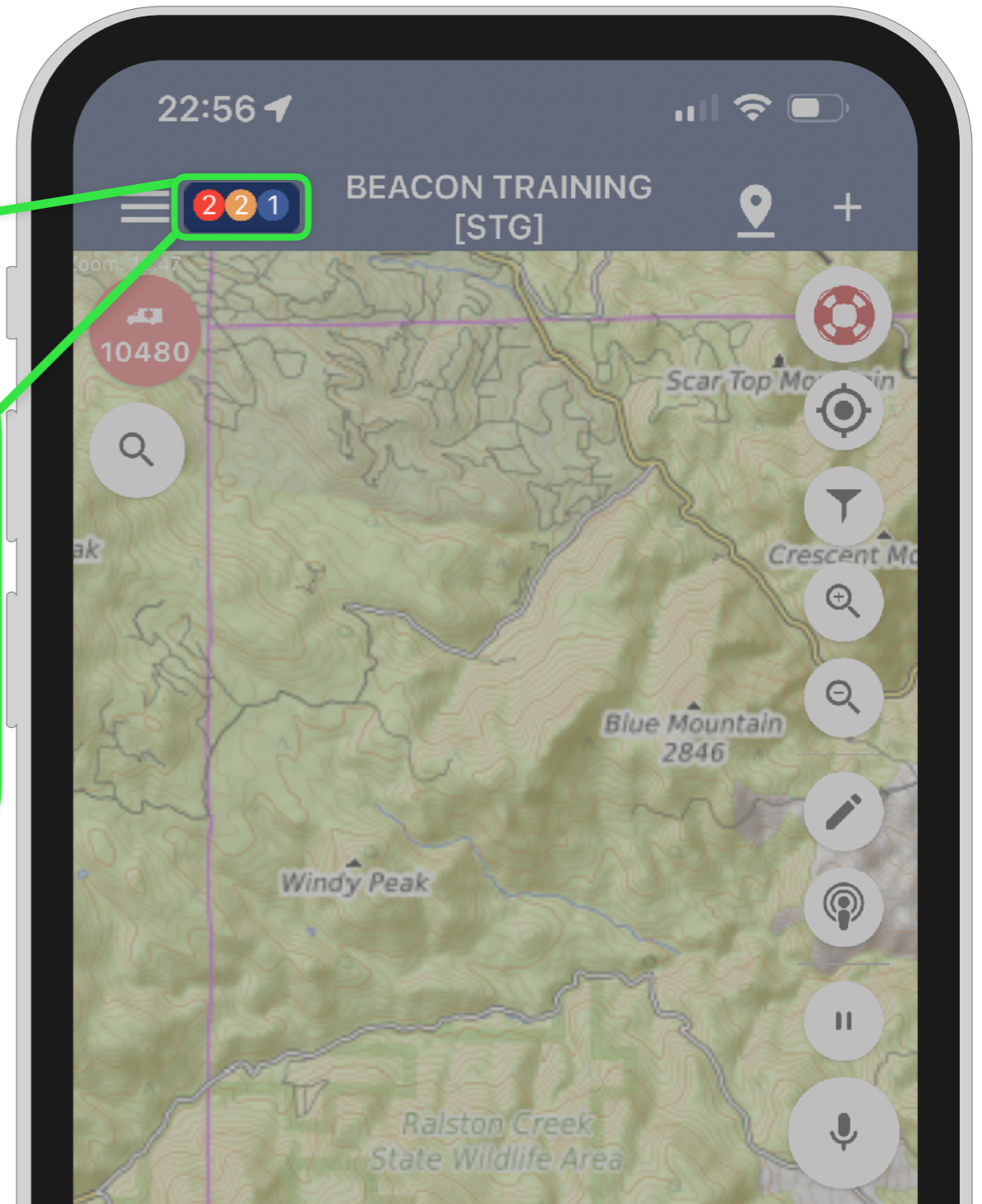
Active Incidents Count Badges

Count badges will now be displayed in the top bar on the Home Screen showing the quantity of Active Incidents per Incident Priority

Immediate

Queued

Scheduled



Additional Notes:

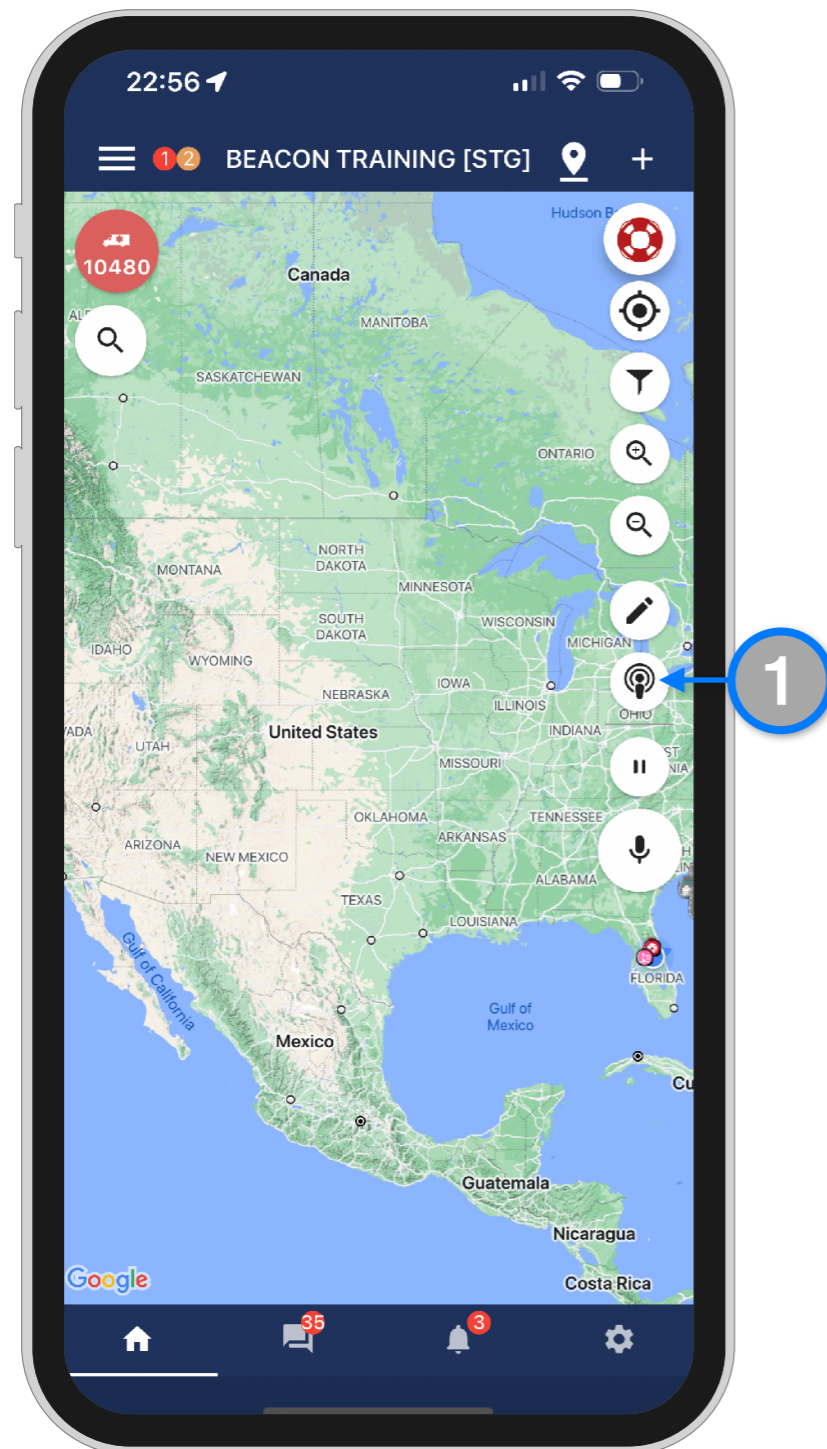
- If there are no active incidents, badges will not be displayed.



Mobile App

New Beacon Updates

Ping Button Now Available for Users with Supervisor Permissions



Press the ping button to retrieve the most updated location of all responders. All responders who have enabled GPS Tracking permissions will be displayed on the map.

Additional Notes:

- Location permissions should also be granted to the Beacon app on the device settings in order for GPS tracking to work accordingly.
- It might be possible that background location tracking is limited for iOS users when the app is closed or the screen locked. If the app is open and being displayed, and, all GPS permissions are enabled, the responder's location should update as described on the settings selected for GPS Tracking on Beacon

GPS Tracking

While the app is open

Always

While the app is open

Only During Incidents

Never



Mobile App

New Beacon Updates

Interactive Buttons in Push Notifications (Now supporting iOS devices)

The introduction of interactive buttons to the mobile app push notifications will give the ability to continue the Incident Workflow without a need to open the app.

To use interactive buttons on iOS devices

1. Interactive buttons notifications will start after user confirms En-Route through the mobile app. You will notice the notification banner on top of the screen.
2. When ready, go to the notification center and look for the Beacon notifications.
3. Press and hold the notification to display the Workflow option.
4. When making a selection, a new notification will arrive with the next step on the Beacon workflow until the incident is completed.

*** Please note that some incident response workflow features like Requesting Additional Resources and Transporting Patients require additional interaction with the mobile app to confirm the specific details. Also remember that different Responder Types have different workflow messages therefore Interactive Buttons on push Notifications might be different.

